



# POWIAT DZIERŻONIOWSKI

Rynek 27, 58-200 Dzierżoniów

tel. +48 74 832 18 64

faks. +48 74 832 15 60

e-mail: [powiat@pow.dzierzoniow.pl](mailto:powiat@pow.dzierzoniow.pl)

[www.pow.dzierzoniow.pl](http://www.pow.dzierzoniow.pl)

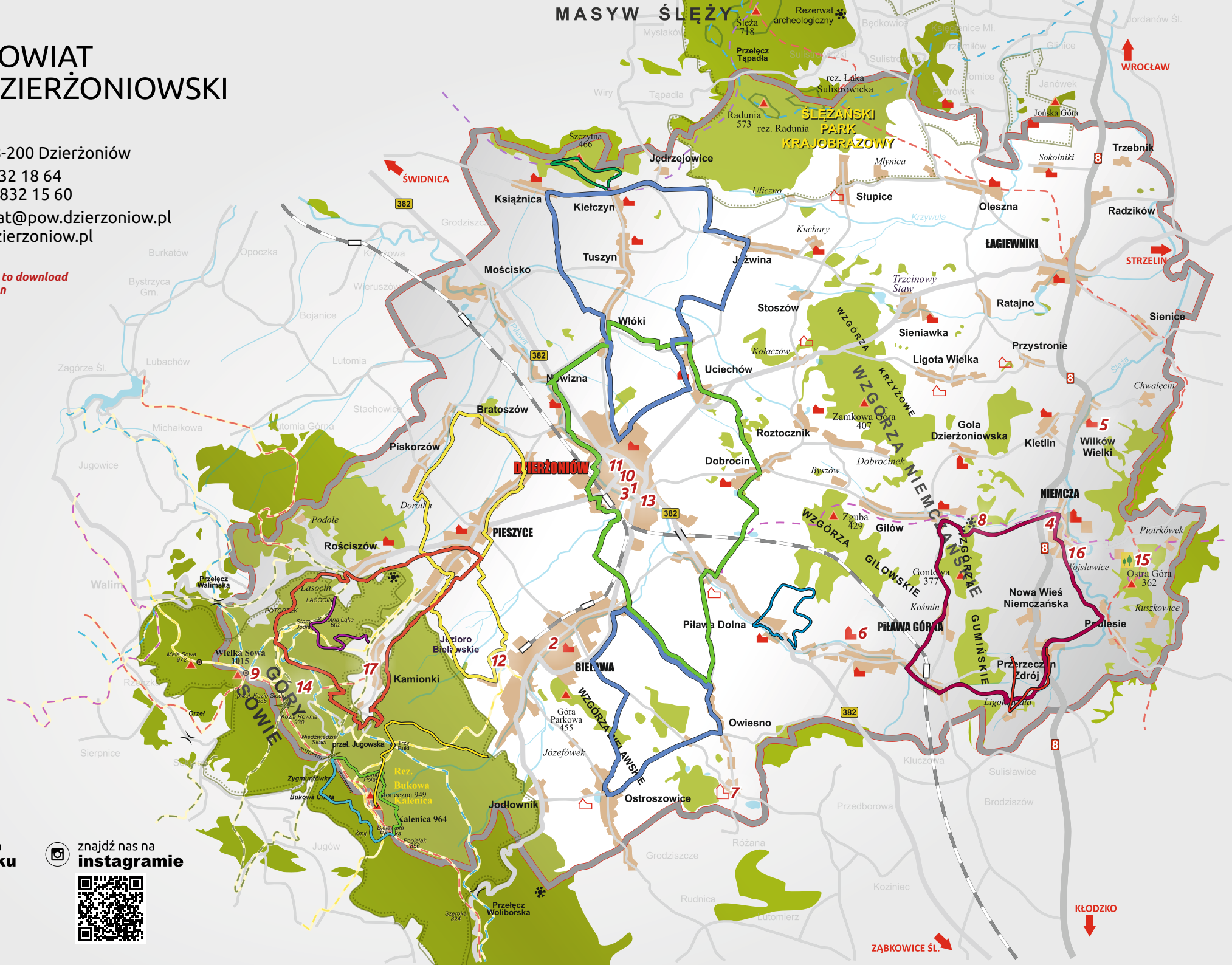
Scan the QR Code to download  
the English version  
PDF file (5 MB)



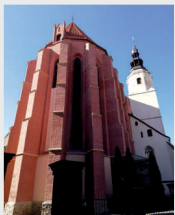
znajdź nas na  
**facebooku**



znajdź nas na  
**instagramie**



## 1 Church of st. George in Dzierżoniów



Legends say that the church was built in 1159 by order of the prince Bolesław Kędzierzawy. There is a wealth of sculptures and altars, a classicist chapel tombstone of the Kellner family, and numerous epitaphs and tombstones. Worth noting is also recently renovated altar of the Assumption of the Blessed Virgin Mary and located in front of the church - two baroque figures of St. George and St. John Nepomuk (around 1720).

Dzierżoniów, Kościelna 5, facebook.com/swjerzydzierzoniow

## 2 Parish of Of the Assumption of the Blessed Virgin Mary in Bielawa

The temple in Bielawa was built in the years 1868-76. The author of the project was a famous Wrocław designer of church building Alexis Langer. The Church is a three-nave structure in the form of a cross. The interior is decorated in the neo-Gothic style. The church has a 30-voice organ from the 19th century. The temple was consecrated in 1892. In the post-war times the Church was restored many times.

### Observation Tower of the Church of the Assumption of the Blessed Virgin Mary

The tower is at the forefront of the highest church towers in Poland and is 101 m high. To reach its top you have to climb over 300 fan stairs. It's worth taking up the challenge because there are beautiful views at the top, which can be admired from four terraces viewpoints, equipped with teleoptic devices and information boards about history of the tower and the church.

Bielawa, Cardinal Stefan Wyszyński 1, www.parafiabelawa.pl



## 3 Synagogue Rutika in Dzierżoniów

It was built by the Jewish community at the end of the 19th century. Since 1994 inscribed to the register of monuments, and in 2012 it was named Rutika - in honor of a five-year-old girl murdered in the Holocaust in 1942. Since 2007, the owner of the synagogue has been the Beiteinu Chaj - 2004 Foundation. After renovation, the building serves as an integration and cultural center. To visit the synagogue, please contact the Beiteinu Chaj-2004 Foundation.

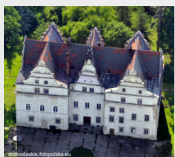
Dzierżoniów, Ignacego Kraskiego 28, www.synagogarutika.com

## 4 Castle in Niemcza

It is a 14th-century building, rebuilt several times. It was established during the reign of prince Bolek I. Previously, there were wooden buildings here. In the Middle Ages the castle had a defensive character also because of the location on the protruding promontory over the Słęża River. In the 18th century the Castle was an impressive baroque residence due to numerous reconstructions and extensions. At that time, a chapel was added to it. Unfortunately, a few years later the castle was consumed by a great fire. Currently, the castle's glory days are over. It is in private hands and visiting it inside is not possible. Interested visitors can only see the building from the outside.

Niemcza, Piastowska 5

## 5 Palace in Wilków Wielki



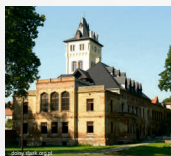
Renaissance manor house from the turn of the 16th and 17th centuries was built on the place of an older defensive tower. Rebuilt and modernized many times. After the II world war, it housed a Breeding Center, which still owns it today. The castle complex includes a park and farm buildings.

Wilków Wielki 25 (by the national road No. 8)

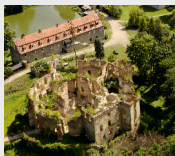
## 6 Gladishof Palace Complex in Piława Górna

The Gladishof Palace Complex "Zamczysko" was built at the turn of the 17th and 18th centuries. The building was rebuilt in the mid-nineteenth century, and it acquired a neo-gothic appearance. A former farm with farm buildings is located behind the palace. There is also a landscaped park with an area of 3.8 ha around the palace, dating back to the 19th century. Currently, the buildings are private property.

Piława Górna, Henryka Sienkiewicza 96



## 7 Knight's Castle in Owiesno



Built in the years of 1385-1417. It is the only object of this type in Poland built on a circular plan. Currently, the castle ruins are under the care of the "Zamek Chudów" Foundation, thanks to which in 2009 the first cleaning and security works were carried. Outdoor events and knight tournaments take place in the ruins. Midsummer's Night celebrations are a cyclical event that has been taking place here for several years (around June 21).

Owiesno

## 8 Tatar Camp in Gilów



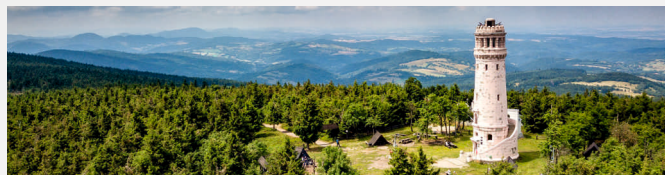
It is one of the largest settlements in Lower Silesia, dating from the turn of the 9th and 10th century and belonging to the cultural circle of the first Slavic state - the Great Moravian State. There are about 2 km of walking paths with viewpoints prepared for tourists.

Gilów (by the road leading to Niemcza)

## 9 The Observation Tower on Wielka Sowa (Great Owl Mountain)

The 25-meter tower, built in the years 1905-1906 from concrete blocks, is located on the highest peak of the Sowie (Owl) Mountains - 1015 m above sea level. The tower is the destination of thousands of domestic and foreign tourists each year.

www.pieszyce.pl/index.php/wielka-sowa/godzinny-otwarciecennik



## 10 The Town Hall in Dzierżoniów

Built in the second half of the 13th century. It is the seat of the city council since 1337. The building obtained its present appearance after the reconstruction performed in the years of 1873 - 1875. The town hall tower to which leads a gothic portal from the 14th - 15th centuries was built a little later. A minting workshop which is a reconstruction of the 14th-century mint is located in the lower part of the tower of the Dzierżoniów Town Hall. You can make an unforgettable souvenir there by yourself.

Dzierżoniów, Rynek 1



## 11 City Museum of Dzierżoniów

The City Museum of Dzierżoniów was established on May 1, 2011, by the transformation of the Regional Chamber operating at the Dzierżoniów Cultural Center. The museum is located in the Cohn family villa. The town palace, was built probably in 1897, originally belonged to Hermann Cohn, the co-founder of Cohn Gebrüder - one of the first mechanical weaving mills in Dzierżoniów.

Dzierżoniów, Świdnicka 30, www.mmdz.pl/oferta/zwiedzanie

## 12 Bielawskie Lake

A picturesque situated lake with a sandy and guarded beach, an island, a pier, sports fields and an outdoor gym. You can go on the lake by canoe or pedalo from the marina located right next to the bathing beach. There is a fountain and an outdoor swimming pool right next to the Bielawskie Lake, with a water playground and a slide.

Bielawa, Wysoka 1



## 13 Hilbert's Mill



The mill was built in the 1840s and run until World War II by members of the Hilbert family. The mill was transformed into the Museum of Milling as a part of the activities of the Foundation for the Protection of Industrial Heritage in Silesia. The project includes the maintenance of keeping facility open with full historic production equipment from the 1930s.

Dzierżoniów, Batalionów Chłopskich 11, www.muzeatechniki.pl

## 14 Owl Mountains

It's a great place for tourists who like hiking. One of the few with a view of the entire Sudetes from the Jeseník Range in the east to the Jizera Mountains in the west. An attractive recreational area for lovers of hiking, cycling, skiing and even who loves lake bathing.

## 15 Arboretum in Wojstawice



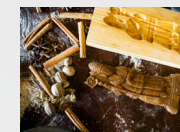
From 1988 a branch of the Botanical Garden of the University of Wrocław. The collection includes 4,650 species of woody plants and 4,885 species and varieties of perennials. There are collections of rhododendrons - 900 species and varieties, daylilies - 3,100 species and varieties, and boxwood - 80 species and varieties, which have been recognized by the Polish Society of Botanical Gardens as National Collections.

Niemcza, Wojstawice 2, www.arboretumwojstawice.pl

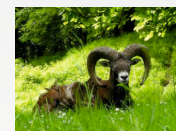
## 16 Gingerbread house in Niemcza

It's a "living museum" of the region's tradition and a manufacture of historical gingerbread. Thanks to the gingerbread workshop, you can see traditional wooden forms, touch traditional ingredients and feel their incomparable aroma.

Niemcza, Dębowa 10, www.muzeumniemcza.pl/piernikarnia



## 17 The Owl Mountains Museum in Kamionki



The largest museum in the region with such a varied subject matter, where you can find agricultural machinery and tools, household items and appliances, many machines and tools in the field of technology, as well as documentation and souvenirs of local factories, i.e. BIELTEX, BIELBAW, SILESIANA, TECHNOTEX, DFK, DIORA.

Pieszyce, Kamionki 12, www.muzeumsudety.pl/index.php/kontakt

## 18 Nature paths

The network of natural, educational and historical trails and paths marked out in the Dzierżoniów County is over 150 kilometers in total. The pedestrian routes have been prepared in such a way as to distinguish the greatest natural and architectural values of the region. Walking among fields, hills and mountains, you can take a break from the hustle and bustle of the city and regenerate your strength.

www.pow.dzierzonow.pl/dla-turysty/sciezki-przyrodnicze



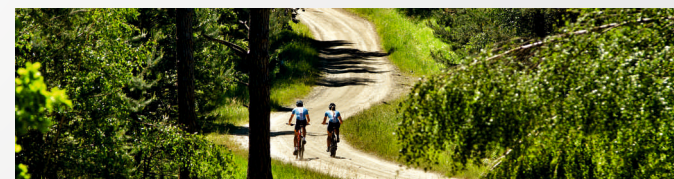
## 19 Bicycle and MTB routes

The Dzierżoniów County has over 700 km of bicycle routes in total. Cycling enthusiasts will find here, landscape trails lead among small hills, greenery of the surrounding fields, architectural monuments and interesting, charming nooks with wonderful views to the Valley of Dzierżoniów and the panorama of the Owl Mountains.

Seven different bike routes and the largest and fastest growing in Poland, network of mountain bike routes of the Sudety MTB Zone combines active leisure, communing with nature and tourism. Everyone can find something for themselves here.

www.pow.dzierzonow.pl/dla-turysty/trasy-rowerowe

www.strefamtbudety.pl/tt/trasy



Scan the QR Code to download the English version PDF file (5 MB)



POWIAT  
DZIERŻONIOWSKI



Rynek 27, 58-200 Dzierżoniów  
tel. +48 74 832 18 64  
faks. +48 74 832 15 60  
e-mail: powiat@pow.dzierzonow.pl  
www.pow.dzierzonow.pl